

LIGHT HOUSE 1

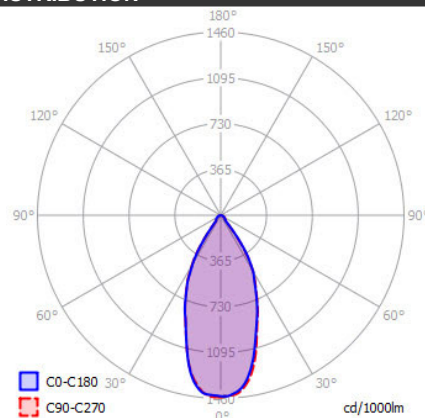
SPECIFICATIONS

| | | |
|---------------------|--------|-----------------------------|
| MOUNTING | | CEILING |
| POWER | [W] | 9,3 |
| LAMP | | built-in LED |
| LUMINOUS FLUX* | [lm] | 860 |
| LIGHT COLOUR | [K] | 2700 |
| CRI | | >90 |
| BEAM ANGLE | [°] | 32 |
| AVERAGE LIFETIME | [h] | L80/B50.000 |
| LUMINOUS EFFICACY | [lm/W] | 92 |
| POWER SUPPLY | | 220-240V AC 50/60 Hz |
| LED-DRIVER | | INCLUDED |
| DIMMING | | PHASE DIM |
| THROUGH-WIRING | | YES |
| MATERIAL | | ALUMINUM |
| INGRESS PROTECTION | | IP20 |
| PROTECTION CLASS | | I |
| NET WEIGHT | [kg] | 1,02 |
| GROSS WEIGHT | [kg] | 1,05 |
| COLOUR (HOUSING) | | WHITE ~RAL9003 |
| COLOUR (HOUSING) | | BLACK ~RAL9005 |



LIGHT DISTRIBUTION

32°



*Luminous flux values are nominal LED data at a operating temperature of 25° C

OPTIONS / OPTIONAL ACCESSORIES

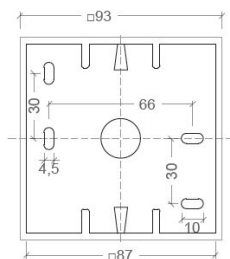
Colours



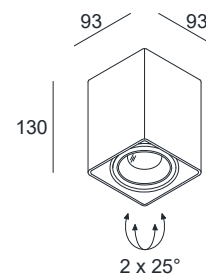
white

black

MOUNTING DIMENSIONS (DRILLING TEMPLATE)



FIXTURE DIMENSIONS



CRI>90



IP20

DLS LIGHTING

www.dslighting.com

***DLS**
LIGHTING