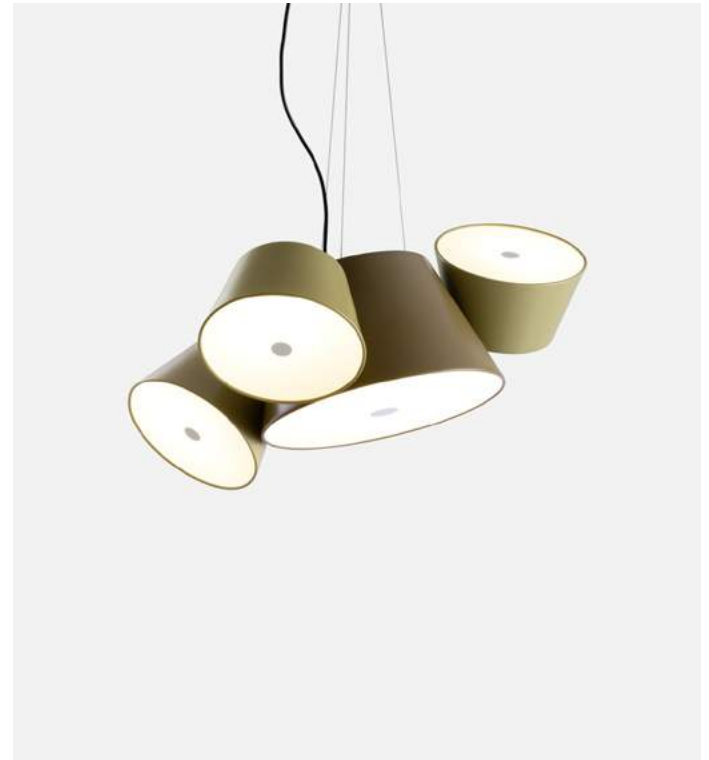




Tam Tam

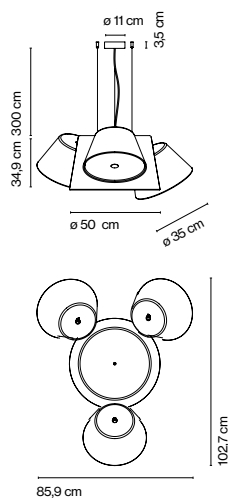
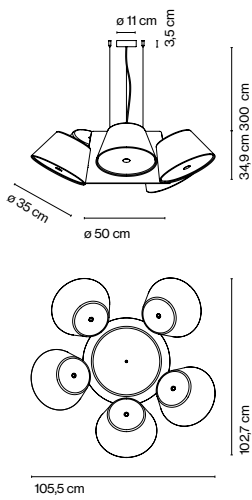
Fabien Dumas

marset

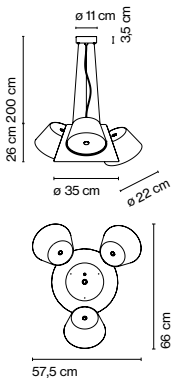


Tam Tam 5

Tam Tam 3



Tam Tam Mini



Tam Tam 5

⦿ 13 x E27 LED Standard 8W

Tam Tam 3

⦿ 9 x E27 LED Standard 8W

Tam Tam Mini

⦿ 5 x E27 LED Standard 8W

A central shade in lacquered aluminium, to which are attached various satellite shades that can be rotated through 360°. An opalescent methacrylate diffuser over the open end softens the light.



Central shade

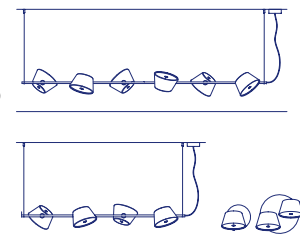
- Black semi-matt (RAL 9011)
- Off-white semi-matt (RAL 1013)
- Blue grey semi-matt (RAL 7031)
- Khaki semi-matt (RAL 7008)

- [Download](#) Assembly Instructions
- [Download](#) Photometric Data
- [Download](#) 2D
- [Download](#) 3D
- [Download](#) Energy label

Satellite shades

- Black semi-matt (RAL 9011)
- Off-white semi-matt (RAL 1013)
- Sand semi-matt (RAL 7032)
- Silver grey semi-matt (RAL 7001)
- Olive yellow semi-matt (RAL 1020)
- Orange semi-matt (RAL 2000)
- Brown grey semi-matt (RAL 7013)

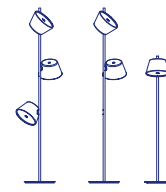
Range



Black electrical cord

Watch the video

info@marset.com
www.marset.com



Tam Tam, a new perception in the world of lamps, which extols repetitiveness by focusing on the archetypal lampshade: a number of light sources pointed in different directions, geometrically arranged to invoke a feeling of organized chaos.